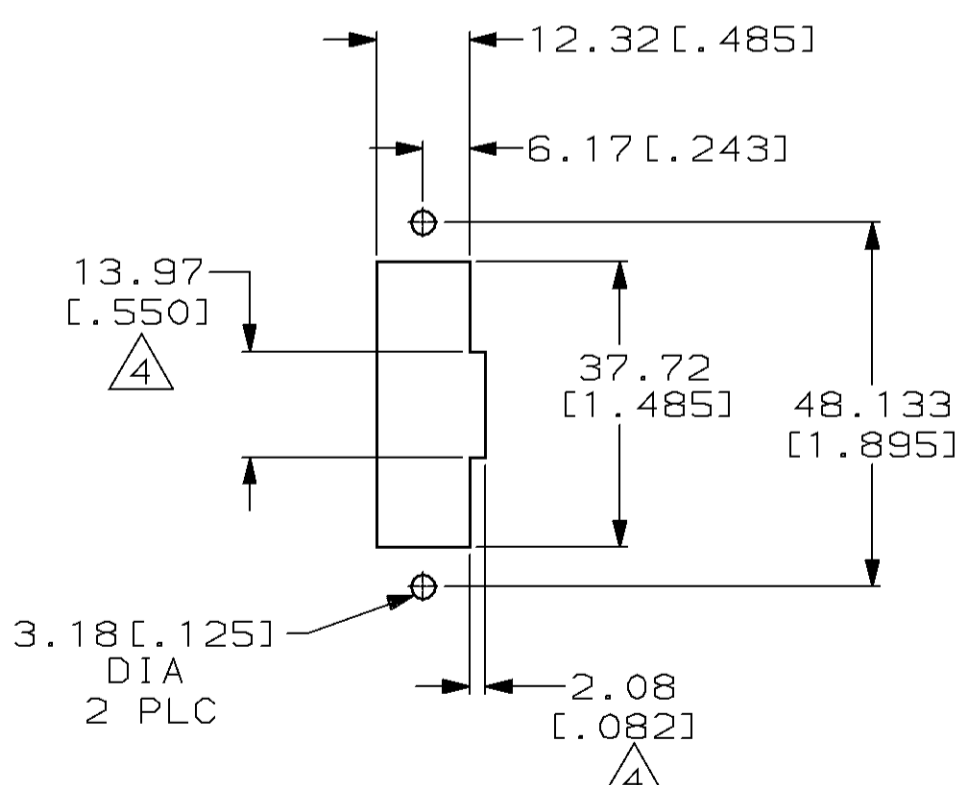
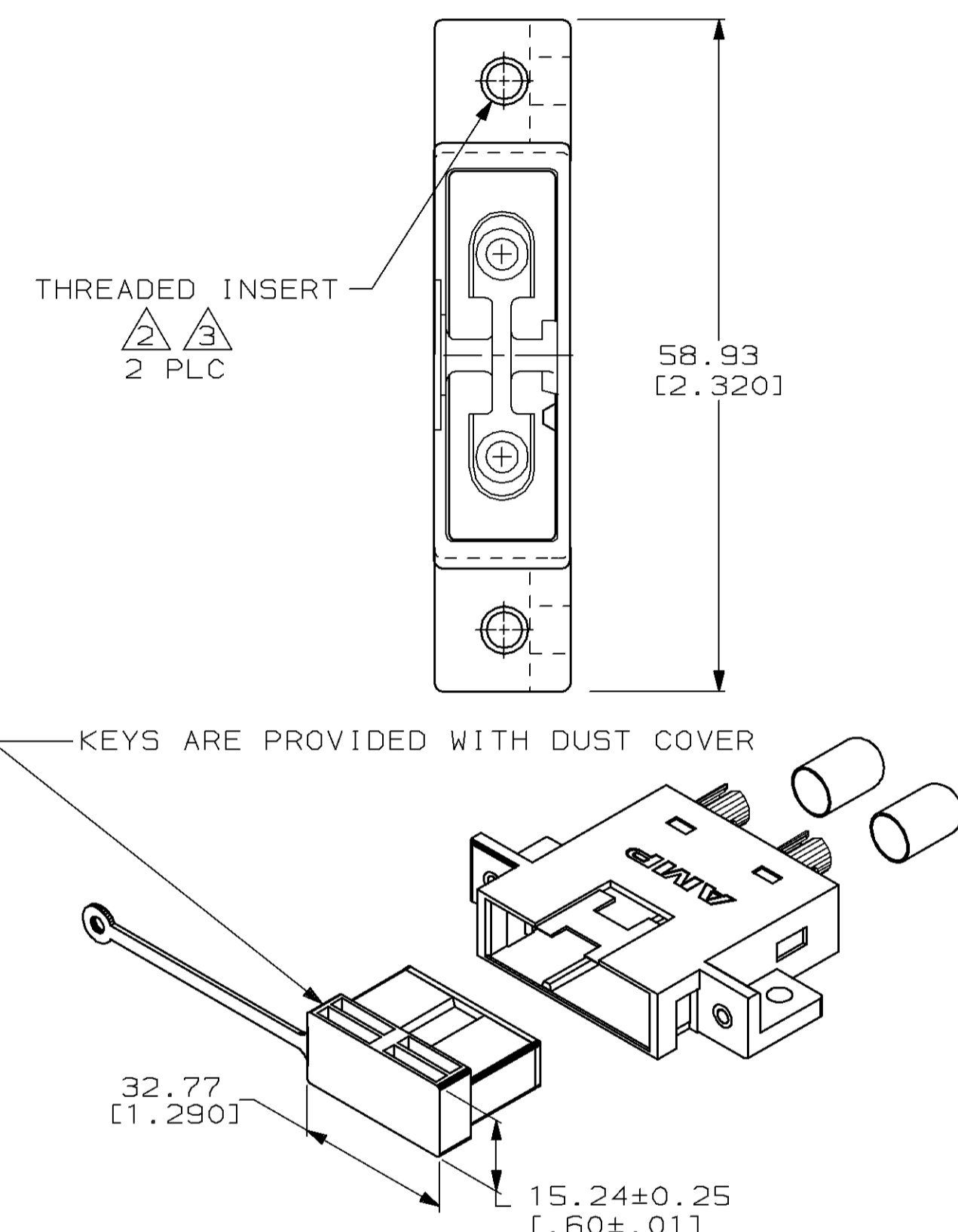
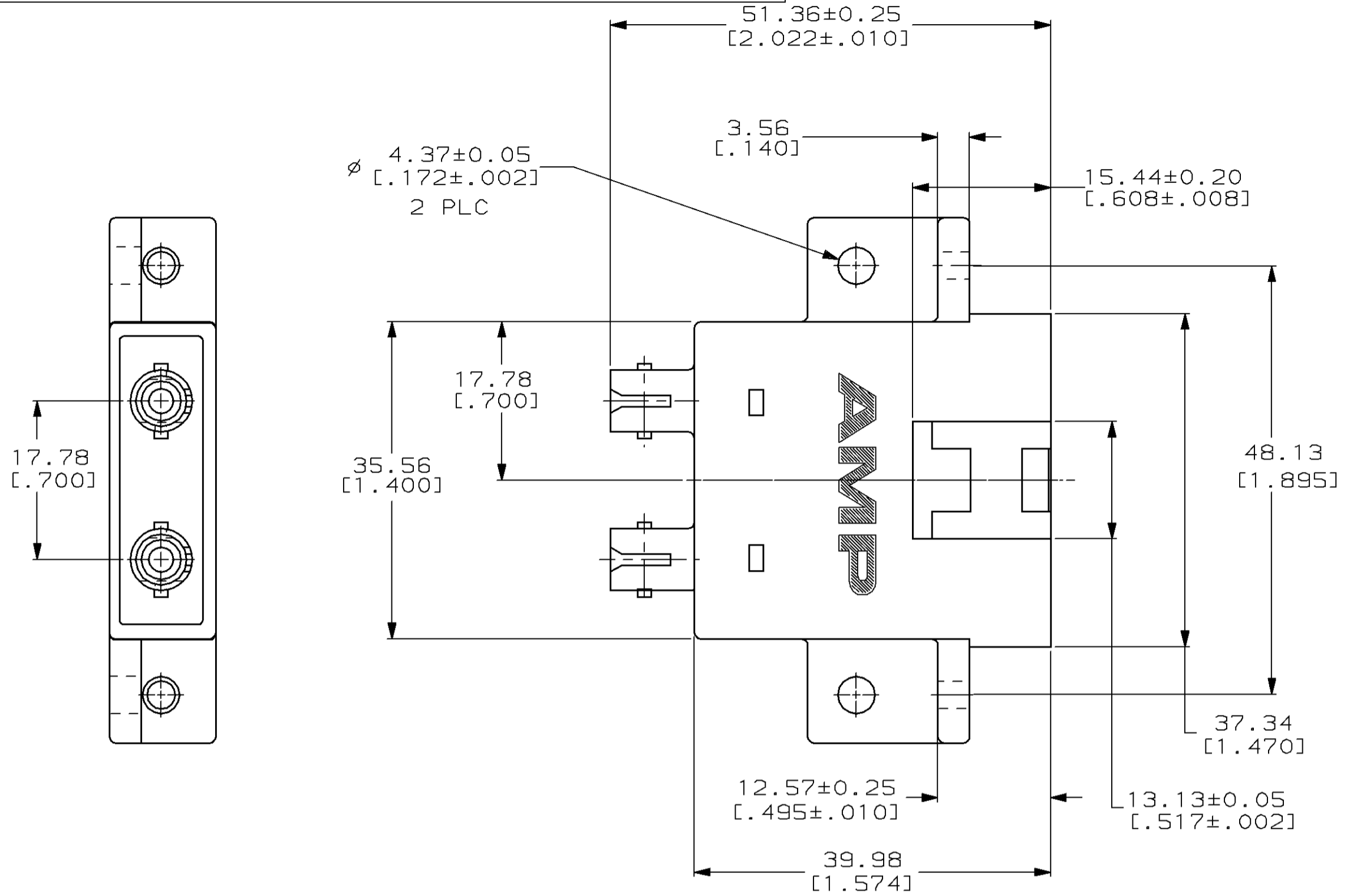


THIS DRAWING IS UNPUBLISHED. RELEASED FOR PUBLICATION  
 © COPYRIGHT 19 BY AMP INCORPORATED. ALL INTERNATIONAL RIGHTS RESERVED.

LOC	DIST	P	F	ZONE	LTR	REVISIONS	DATE	APPD
CE	16				B	REV PER 0500-0087-94	11-22-94	RH/GL
						DESCRIPTION		



1. DIMENSIONS IN [ ] ARE IN INCHES.
- 2 #4-40 THREADED INSERT.
- 3 M3X0.5 THREADED INSERT.
- 4 OPTIONAL CUTOUT FOR FIELD KEY INSERTION AND REMOVAL. KEY EXTRACTION TOOL PART NUMBER: 503679-1.

3	BLACK	CERAMIC	502809-3
3	BEIGE	CERAMIC	502809-2
2	BLACK	CERAMIC	502809-1
	COLOR	ALIGNMENT SLEEVE MATERIAL	PART NUMBER

DO NOT SCALE PRINT. UNLESS SPECIFIED DIMENSIONS IN mm TOLERANCES ON : 2 PLC DEC ± - 3 PLC DEC ± 0.13 [.005] ANGLES ± -		DR 10-13-92 R.HILEMAN	PART NO	
MATERIAL	THERMOPLASTIC	CHK 10-14-92 T.FAWCETT	AMP INCORPORATED Harrisburg, Pa. 17105	
FINISH	SEE TABLE	APPD 10-14-92 T.FAWCETT	NAME	
		APPD 10-16-92 D.FISHER	FSD TO 2.5mm BAYONET COUPLING ASSEMBLY, FIELD KEYABLE, AMP FSD, SINGLEMODE	
		APPLICATION SPEC	SIZE	FSCM NO
			C	00779
		WEIGHT	SCALE	DRAWING NO
			2:1	502809
				SHEET 1 OF 1

METRIC

CUSTOMER DRAWING